

# RUGGTEK

RUGGED MOBILE COMPUTER



## BROCHURE

The professional partner for  
rugged devices.

# PRODUCT CATALOG 2025

Ruggtek reserves the right to make changes at any time without notice.  
The information contained in this document is subject to periodic review.  
The most current revision can be found on the website at [www.ruggtek.com](http://www.ruggtek.com).



# WE ARE RUGGTEK

---

An information technology company that offers a wide range of mobile solutions including handheld PCs, tablet PCs and vehicular computers designed for different working environments.

# OUR IDENTITY

---

Ruggtek is a registered trademark owned by Sesitek SRL, a company founded by an experienced staff who has been involved in industrial computer and automation market for more than 25 years.

The soul of Ruggtek is in Italy, the place where ideas take shape and where sales department and customer care are managed.

The office supports european resellers and R&D staff coordination, accounting, product planning, and marketing.

The headquarter is located in Sassuolo, well within an hour's drive from Bologna International Airport and convenient to the high-speed train stations of Modena and Reggio Emilia. Thanks to the logistically advantageous location and the constant availability of products in stock, Ruggtek is able to quickly ship to all European countries via express courier.

Since the introduction of the Ruggtek brand, we have never stopped challenging ourselves to improve our business. We love the technology, we continue to improve the product developing new markets and building new partnerships.

Every day we nurture these aspects to be one of the leading providers of rugged mobile tablets and handheld computers in the EU market.

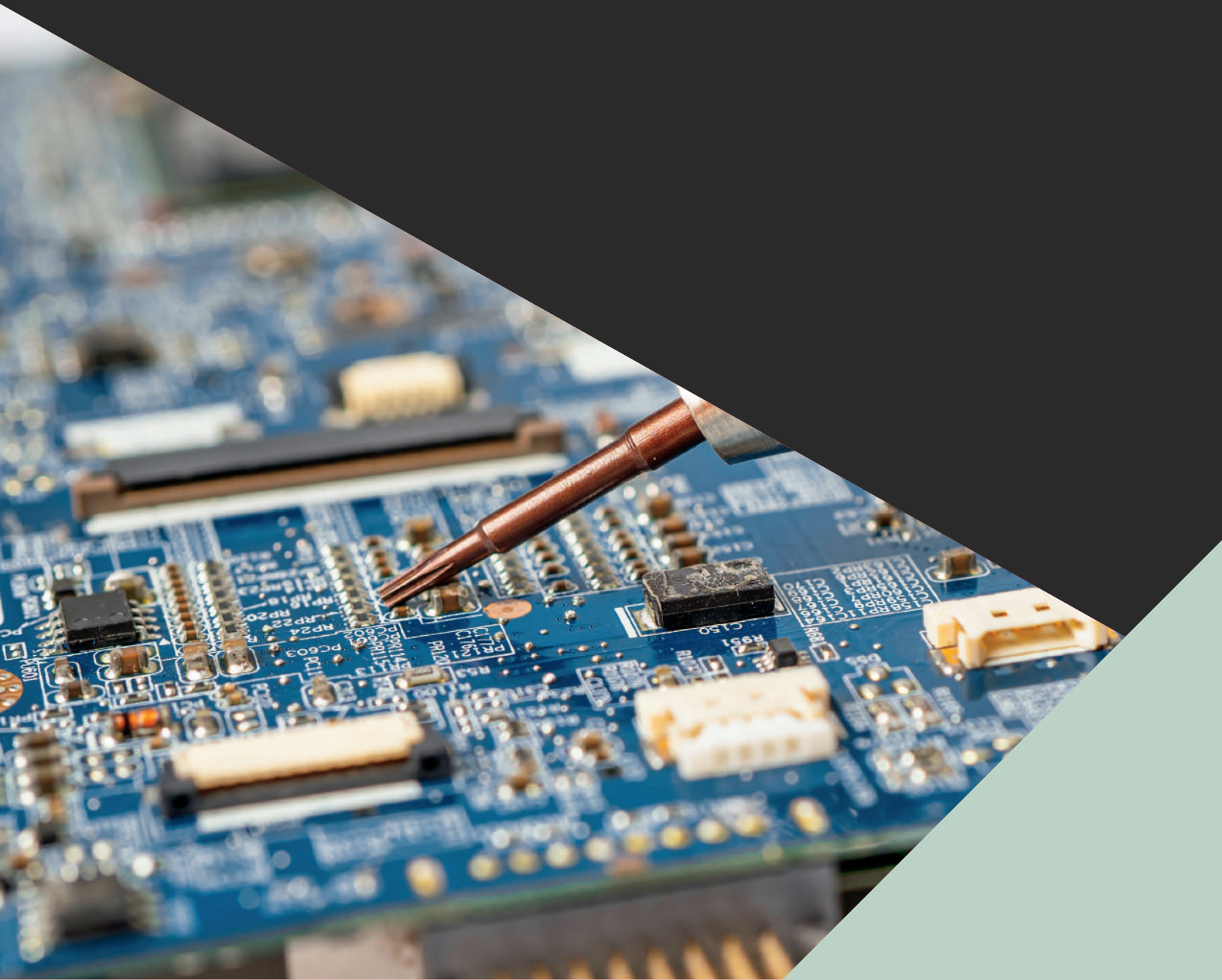


# WHY RUGGTEK

---

When you buy a Ruggtek device you are assured of getting a rugged, well-made computer capable of running 24/7, 365 days by year.

Each device comes with relevant certifications for the European market, an extendable warranty of up to 5 years with coverage on accidental damages, and a technical customer care to help the user to solve any operational issues throughout the product's life cycle.





# RUGGED INDUSTRIAL TABLETS

---

A reliable and durable device that can withstand in any climatic and environmental situation.



**WATERPROOF**



**CUSTOM-MADE  
SOLUTION**



**RUGGED &  
SHOCKPROOF**



**LONG-TERM  
SUPPLY**

# TABLET WINDOWS



**RT 413**

**DISPLAY:** 13.3" resolution 1920 x 1080  
**TOUCHSCREEN:** Capacitive multi-touch  
**CPU:** Intel Quad-Core N5100  
**MEMORY:** 8GB/256GB  
**OPERATING SYSTEM:** Windows 10/11  
**FEATURES:** Big screen size



**RT 613**

**DISPLAY:** 13.3" resolution 1920 x 1080  
**TOUCHSCREEN:** Capacitive multi-touch  
**CPU:** Intel Core i5-1235U  
**MEMORY:** 8GB/256GB  
**OPERATING SYSTEM:** Windows 10/11  
**FEATURES:** High performance



**RT 252**

**DISPLAY:** 12.2" resolution 1920 x 1200  
**TOUCHSCREEN:** Capacitive multi-touch  
**CPU:** Intel Core i5-1235U  
**MEMORY:** 16GB/128GB  
**OPERATING SYSTEM:** Windows 10/11  
**FEATURES:** High performance



**RT 412**

**DISPLAY:** 12.2" resolution 1920 x 1200  
**TOUCHSCREEN:** Capacitive multi-touch  
**CPU:** Intel Quad-Core N5100  
**MEMORY:** 8GB/128GB  
**OPERATING SYSTEM:** Windows 10/11  
**FEATURES:** Big screen size



**RT 510**

**DISPLAY:** 10.1" resolution 1920 x 1200  
**TOUCHSCREEN:** Capacitive multi-touch  
**CPU:** Intel Core i5-8200Y  
**MEMORY:** 8GB/256GB  
**OPERATING SYSTEM:** Windows 10/11  
**FEATURES:** High performance



**RT 610**

**DISPLAY:** 10.1" resolution 1920 x 1200  
**TOUCHSCREEN:** Capacitive multi-touch  
**CPU:** Intel Core i5-1235U  
**MEMORY:** 8GB/256GB  
**OPERATING SYSTEM:** Windows 10/11  
**FEATURES:** High performance



### RT 310

**DISPLAY:** 10.1" resolution 1920 x 1200  
**TOUCHSCREEN:** Capacitive multi-touch  
**CPU:** Intel Quad-Core Z8350  
**MEMORY:** 4GB/64GB  
**OPERATING SYSTEM:** Windows 10  
**FEATURES:** Touch with industrial gloves



### RT 410

**DISPLAY:** 10.1" resolution 1920 x 1200  
**TOUCHSCREEN:** Capacitive multi-touch  
**CPU:** Intel Quad-Core N5100  
**MEMORY:** 8GB/256GB  
**OPERATING SYSTEM:** Windows 10/11  
**FEATURES:** Touch with industrial gloves



### RT 509

**DISPLAY:** 8.1" resolution 1920 x 1200  
**TOUCHSCREEN:** Capacitive multi-touch  
**CPU:** Intel Core i5-8200Y  
**MEMORY:** 8GB/256GB  
**OPERATING SYSTEM:** Windows 10/11  
**FEATURES:** High performance



### RT 409

**DISPLAY:** 8.1" resolution 1920 x 1200  
**TOUCHSCREEN:** Capacitive multi-touch  
**CPU:** Intel Quad-Core N5100  
**MEMORY:** 8GB/256GB  
**OPERATING SYSTEM:** Windows 10/11  
**FEATURES:** Touch with industrial gloves



### RT 309

**DISPLAY:** 8.1" resolution 1920 x 1200  
**TOUCHSCREEN:** Capacitive multi-touch  
**CPU:** Intel Quad-Core Z8350  
**MEMORY:** 4GB/64GB  
**OPERATING SYSTEM:** Windows 10  
**FEATURES:** Touch with industrial gloves

# TABLET LINUX



## RTL 252

**DISPLAY:** 12.2" resolution 1920 x 1200  
**TOUCHSCREEN:** Capacitive multi-touch  
**CPU:** Intel Core i5-1235U  
**MEMORY:** 16GB/128GB  
**OPERATING SYSTEM:** Ubuntu 22 LTS  
**FEATURES:** High performance



## RTL 412

**DISPLAY:** 12.2" resolution 1920 x 1200  
**TOUCHSCREEN:** Capacitive multi-touch  
**CPU:** Intel Quad-Core N5100  
**MEMORY:** 8GB/128GB  
**OPERATING SYSTEM:** Ubuntu 22 LTS  
**FEATURES:** Big screen size



## RTL 410

**DISPLAY:** 10.1" resolution 1920 x 1200  
**TOUCHSCREEN:** Capacitive multi-touch  
**CPU:** Intel Quad-Core N5100  
**MEMORY:** 8GB/256GB  
**OPERATING SYSTEM:** Ubuntu 22 LTS  
**FEATURES:** Touch with industrial gloves



## RTL 510

**DISPLAY:** 10.1" resolution 1920 x 1200  
**TOUCHSCREEN:** Capacitive multi-touch  
**CPU:** Intel Core i5-8200Y  
**MEMORY:** 8GB/256GB  
**OPERATING SYSTEM:** Ubuntu 22 LTS  
**FEATURES:** High performance



## RTL 509

**DISPLAY:** 8.1" resolution 1920 x 1200  
**TOUCHSCREEN:** Capacitive multi-touch  
**CPU:** Intel Core i5-8200Y  
**MEMORY:** 8GB/256GB  
**OPERATING SYSTEM:** Ubuntu 22 LTS  
**FEATURES:** High performance



## RTL 409

**DISPLAY:** 8.1" resolution 1920 x 1200  
**TOUCHSCREEN:** Capacitive multi-touch  
**CPU:** Intel Quad-Core N5100  
**MEMORY:** 8GB/256GB  
**OPERATING SYSTEM:** Ubuntu 22 LTD  
**FEATURES:** Touch with industrial gloves

# TABLET ANDROID

---



**RTA 112**

**DISPLAY:** 12.2" resolution 1920 x 1200  
**TOUCHSCREEN:** Capacitive multi-touch  
**CPU:** Qualcomm Octa-Core  
**MEMORY:** 8GB/128GB  
**OPERATING SYSTEM:** Android 11  
**FEATURES:** Big screen size



**RTA 310**

**DISPLAY:** 10.1" resolution 1920 x 1200  
**TOUCHSCREEN:** Capacitive multi-touch  
**CPU:** MediaTek Octa-Core  
**MEMORY:** 4GB/64GB o superiore  
**OPERATING SYSTEM:** Android 11  
**FEATURES:** Touch with industrial gloves



**RTA 309**

**DISPLAY:** 8.1" resolution 1920 x 1200  
**TOUCHSCREEN:** Capacitive multi-touch  
**CPU:** MediaTek Octa-Core  
**MEMORY:** 4GB/64GB o superiore  
**OPERATING SYSTEM:** Android 11  
**FEATURES:** Touch with industrial gloves





# HIGH BRIGHTNESS TABLETS

---

High-brightness, sunlight readable tablets for outdoor industrial applications.



**WATERPROOF**



**SUNLIGHT  
READABLE**



**RUGGED &  
SHOCKPROOF**



**WARRANTY  
UP TO 5 YEARS**

# TABLET WINDOWS



**RT 510-HB**

**DISPLAY:** 10.1" resolution 1920 x 1200  
**TOUCHSCREEN:** Capacitive multi-touch  
**CPU:** Intel Core i5-8200Y  
**MEMORY:** 8GB/256GB  
**OPERATING SYSTEM:** Windows 10/11  
**FEATURES:** High performance



**RT 410-HB**

**DISPLAY:** 10.1" resolution 1920 x 1200  
**TOUCHSCREEN:** Capacitive multi-touch  
**CPU:** Intel Quad-Core N5100  
**MEMORY:** 8GB/256GB  
**OPERATING SYSTEM:** Windows 10/11  
**FEATURES:** High-brightness display



**RT 509-HB**

**DISPLAY:** 8.1" resolution 1920 x 1200  
**TOUCHSCREEN:** Capacitive multi-touch  
**CPU:** Intel Core i5-8200Y  
**MEMORY:** 8GB/256GB  
**OPERATING SYSTEM:** Windows 10/11  
**FEATURES:** High performance



**RT 409-HB**

**DISPLAY:** 8.1" resolution 1920 x 1200  
**TOUCHSCREEN:** Capacitive multi-touch  
**CPU:** Intel Quad-Core N5100  
**MEMORY:** 8GB/256GB  
**OPERATING SYSTEM:** Windows 10/11  
**FEATURES:** High-brightness display

# TABLET LINUX

---



## RTL 410-HB

**DISPLAY:** 10.1" resolution 1920 x 1200  
**TOUCHSCREEN:** Capacitive multi-touch  
**CPU:** Intel Quad-Core N5100  
**MEMORY:** 8GB/256GB  
**OPERATING SYSTEM:** Ubuntu 22 LTS  
**FEATURES:** High-brightness display



## RTL 510-HB

**DISPLAY:** 10.1" resolution 1920 x 1200  
**TOUCHSCREEN:** Capacitive multi-touch  
**CPU:** Intel Core i5-8200Y  
**MEMORY:** 8GB/256GB  
**OPERATING SYSTEM:** Ubuntu 22 LTS  
**FEATURES:** High performance



## RTL 509-HB

**DISPLAY:** 8.1" resolution 1920 x 1200  
**TOUCHSCREEN:** Capacitive multi-touch  
**CPU:** Intel Core i5-8200Y  
**MEMORY:** 8GB/256GB  
**OPERATING SYSTEM:** Ubuntu 22 LTS  
**FEATURES:** High performance



## RTL 409-HB

**DISPLAY:** 8.1" resolution 1920 x 1200  
**TOUCHSCREEN:** Capacitive multi-touch  
**CPU:** Intel Quad-Core N5100  
**MEMORY:** 8GB/256GB  
**OPERATING SYSTEM:** Ubuntu 22 LTS  
**FEATURES:** High-brightness display

# TABLET ANDROID

---

10 POLLICI



**RTA 310-HB**

**DISPLAY:** 10.1" resolution 1920 x 1200  
**TOUCHSCREEN:** Capacitive multi-touch  
**CPU:** MediaTek Octa-Core  
**MEMORY:** 4GB/64GB o superiore  
**OPERATING SYSTEM:** Android 11  
**FEATURES:** High-brightness display



**RTA 309-HB**

**DISPLAY:** 8.1" resolution 1920 x 1200  
**TOUCHSCREEN:** Capacitive multi-touch  
**CPU:** MediaTek Octa-Core  
**MEMORY:** 6GB/64GB  
**OPERATING SYSTEM:** Android 11  
**FEATURES:** High-brightness display



## INDUSTRIAL HANDHELDS

---

Smart terminals with barcode reader and a long-life battery for extended use during the working day.



**WATERPROOF**



**RELIABILITY**



**RUGGED &  
SHOCKPROOF**



**LONG LIFE  
BATTERY**

# WINDOWS HANDHELDS



**RP 610**

**DISPLAY:** 6.5" resolution 720×1600  
**TOUCHSCREEN:** Capacitive multi-touch  
**CPU:** Intel Quad-Core N5100  
**MEMORY:** 8GB/128GB  
**OPERATING SYSTEM:** Windows 10/11  
**FEATURES:** Barcode reader included



**RP 550**

**DISPLAY:** 5.5" resolution 1080 x 1920  
**TOUCHSCREEN:** Capacitive multi-touch  
**CPU:** Intel Quad-Core Z8350  
**MEMORY:** 4GB/64GB  
**OPERATING SYSTEM:** Windows 10  
**FEATURES:** Barcode reader included

# PALMARI LINUX



**RPL 550**

**DISPLAY:** 5.5" resolution 1080 x 1920  
**TOUCHSCREEN:** Capacitive multi-touch  
**CPU:** Intel Quad-Core  
**MEMORY:** 4GB/64GB  
**OPERATING SYSTEM:** Ubuntu 22 LTS  
**FEATURES:** Barcode reader included



**RPL 610**

**DISPLAY:** 6.5" resolution 720×1600  
**TOUCHSCREEN:** Capacitive multi-touch  
**CPU:** Intel Quad-Core N5100  
**MEMORY:** 8GB/128GB  
**OPERATING SYSTEM:** Ubuntu 22 LTS  
**FEATURES:** Barcode reader included

# PALMARI ANDROID

---



5.5"



## RPC 620

**DISPLAY:** 5.5" resolution 720 x 1440

**TOUCHSCREEN:** Capacitive multi-touch

**CPU:** MediaTek Octa-Core

**MEMORY:** 4GB/64GB

**OPERATING SYSTEM:** Android 13

**FEATURES:** UHF reader included



5.5"



## RPC 610

**DISPLAY:** 5.5" resolution 720 x 1440

**TOUCHSCREEN:** Capacitive multi-touch

**CPU:** MediaTek Octa-Core

**MEMORY:** 4GB/64GB

**OPERATING SYSTEM:** Android 13

**FEATURES:** UHF and pistol grip



5.5"



## RPC 600

**DISPLAY:** 5.5" resolution 720 x 1440

**TOUCHSCREEN:** Capacitive multi-touch

**CPU:** MediaTek Octa-Core

**MEMORY:** 4GB/64GB

**OPERATING SYSTEM:** Android 13

**FEATURES:** Barcode reader included





# RUGGED SMARTPHONE

---

Essential for professionals and workers who operate in harsh environments, offering durability and waterproofing.



**WATERPROOF**



**RELIABILITY**



**RUGGED &  
SHOCKPROOF**




**LONG LIFE  
BATTERY**

# SMARTPHONE ANDROID

---



6.2" 

## RSM 010

**DISPLAY:** 6.23" resolution 1080 x 2280  
**TOUCHSCREEN:** Capacitive multi-touch  
**CPU:** MediaTek Octa-Core  
**MEMORY:** 6GB/128GB  
**OPERATING SYSTEM:** Android 14  
**FEATURES:** High performance



5.5" 

## RST 220

**DISPLAY:** 5.5" resolution 720 x 1440  
**TOUCHSCREEN:** Capacitive multi-touch  
**CPU:** MediaTek Octa-Core  
**MEMORY:** 4GB/64GB  
**OPERATING SYSTEM:** Android 11  
**FEATURES:** Excellent value for money



5.5" 

## PST 220

**DISPLAY:** 5.5" resolution 720 x 1440  
**TOUCHSCREEN:** Capacitive multi-touch  
**CPU:** MediaTek Octa-Core  
**MEMORY:** 4GB/64GB  
**OPERATING SYSTEM:** Android 11  
**FEATURES:** Barcode reader included



## PROFESSIONAL TABLETS & PDAs

---

Perfect for professional users who need a lightweight and handy device, for use in the store or warehouse.



SUPPORT &  
REPAIR SERVICE



RELIABILITY



WARRANTY  
UP TO 5 YEARS



LONG LIFE  
BATTERY

# TABLET



**RT 308**

**DISPLAY:** 8.1" resolution 1920 x 1200  
**TOUCHSCREEN:** Capacitive multi-touch  
**CPU:** Intel Quad-Core Z8350  
**MEMORY:** 4GB/64GB  
**OPERATING SYSTEM:** Windows 10  
**FEATURES:** Barcode reader included



**RTA 308**

**DISPLAY:** 8.1" resolution 1920 x 1200  
**TOUCHSCREEN:** Capacitive multi-touch  
**CPU:** MediaTek Octa-Core  
**MEMORY:** 4GB/64GB  
**OPERATING SYSTEM:** Android 11  
**FEATURES:** Barcode reader included

# PDA's



**PST 220**

**DISPLAY:** 5.5" resolution 720 x 1440  
**TOUCHSCREEN:** Capacitive multi-touch  
**CPU:** MediaTek Octa-Core  
**MEMORY:** 4GB/64GB  
**OPERATING SYSTEM:** Android 11  
**FEATURES:** Barcode reader included



**RPX 620**

**DISPLAY:** 5.5" resolution 720 x 1440  
**TOUCHSCREEN:** Capacitive multi-touch  
**CPU:** MediaTek Octa-Core  
**MEMORY:** 4GB/64GB  
**OPERATING SYSTEM:** Android 10  
**FEATURES:** UHF reader included



**RPX 600**

**DISPLAY:** 5.5" resolution 720 x 1440  
**TOUCHSCREEN:** Capacitive multi-touch  
**CPU:** MediaTek Octa-Core  
**MEMORY:** 4GB/64GB  
**OPERATING SYSTEM:** Android 10  
**FEATURES:** Barcode reader included



# VEHICULAR TABLETS

---

The most suitable solution for vehiculars: forklifts, trucks, earth moving vehicles, agriculture.



**SUPPORT &  
REPAIR SERVICE**



**DUST  
RESISTANCE**



**WARRANTY  
UP TO 5 YEARS**



**LONG-TERM  
SUPPLY**

# TABLET WINDOWS

---



**RV 110**

**DISPLAY:** 10.1" resolution 1280 x 800  
**TOUCHSCREEN:** Capacitive multi-touch  
**CPU:** Intel Quad-Core N5100  
**MEMORY:** 4GB/64GB  
**OPERATING SYSTEM:** Windows 10/11  
**FEATURES:** Power supply by vehicle



**RV 180**

**DISPLAY:** 8.1" resolution 1280 x 800  
**TOUCHSCREEN:** Capacitive multi-touch  
**CPU:** Intel Quad-Core N5100  
**MEMORY:** 4GB/64GB  
**OPERATING SYSTEM:** Windows 10/11  
**FEATURES:** Power supply by vehicle

# TABLET LINUX

---



**RVL 110**

**DISPLAY:** 10.1" resolution 1280 x 800  
**TOUCHSCREEN:** Capacitive multi-touch  
**CPU:** Intel Quad-Core N5100  
**MEMORY:** 4GB/64GB  
**OPERATING SYSTEM:** Ubuntu 22 LTS  
**FEATURES:** Power supply by vehicle



**RVL 180**

**DISPLAY:** 8.1" resolution 1280 x 800  
**TOUCHSCREEN:** Capacitive multi-touch  
**CPU:** Intel Quad-Core N5100  
**MEMORY:** 4GB/64GB  
**OPERATING SYSTEM:** Ubuntu 22 LTS  
**FEATURES:** Power supply by vehicle

# TABLET ANDROID

---



## RVA 110

**DISPLAY:** 10.1" resolution 1280 x 800  
**TOUCHSCREEN:** Capacitive multi-touch  
**CPU:** MediaTek Octa-Core  
**MEMORY:** 4GB/64GB  
**OPERATING SYSTEM:** Android 12  
**FEATURES:** Power supply by vehicle



## RVA 180

**DISPLAY:** 8.1" resolution 1280 x 800  
**TOUCHSCREEN:** Capacitive multi-touch  
**CPU:** MediaTek Octa-Core  
**MEMORY:** 4GB/64GB  
**OPERATING SYSTEM:** Android 12  
**FEATURES:** Power supply by vehicle





# INDUSTRIAL NOTEBOOKS

---

Rugged industrial laptops are designed for mobility on the job, offering maximum ruggedness in the harshest environments.



DUST  
RESISTANCE



RUGGED &  
SHOCKPROOF



WARRANTY  
UP TO 5 YEARS



LONG LIFE  
BATTERY

# NOTEBOOK WINDOWS

---



## RT 412-KB

**DISPLAY:** 12.2" resolution 1920 x 1200  
**TOUCHSCREEN:** Capacitive multi-touch  
**CPU:** Intel Quad-Core N5100  
**MEMORY:** 8GB/128GB  
**OPERATING SYSTEM:** Windows 10/11  
**FEATURES:** Detachable keyboard



## RLX 015

**DISPLAY:** 15.6" resolution 1920 x 1080  
**CPU:** Intel Core i5-1135G7  
**MEMORY:** 16GB/256GB  
**OPERATING SYSTEM:** Windows 10/11  
**NETWORKING:** RJ45, WiFi, Bluetooth, 4G/5G  
**FEATURES:** Hot-swappable battery

# NOTEBOOK LINUX

---



## RTL 412-KB

**DISPLAY:** 12.2" resolution 1920 x 1200  
**TOUCHSCREEN:** Capacitive multi-touch  
**CPU:** Intel Quad-Core N5100  
**MEMORY:** 8GB/128GB  
**OPERATING SYSTEM:** Ubuntu 22 LT  
**FEATURES:** Detachable keyboard

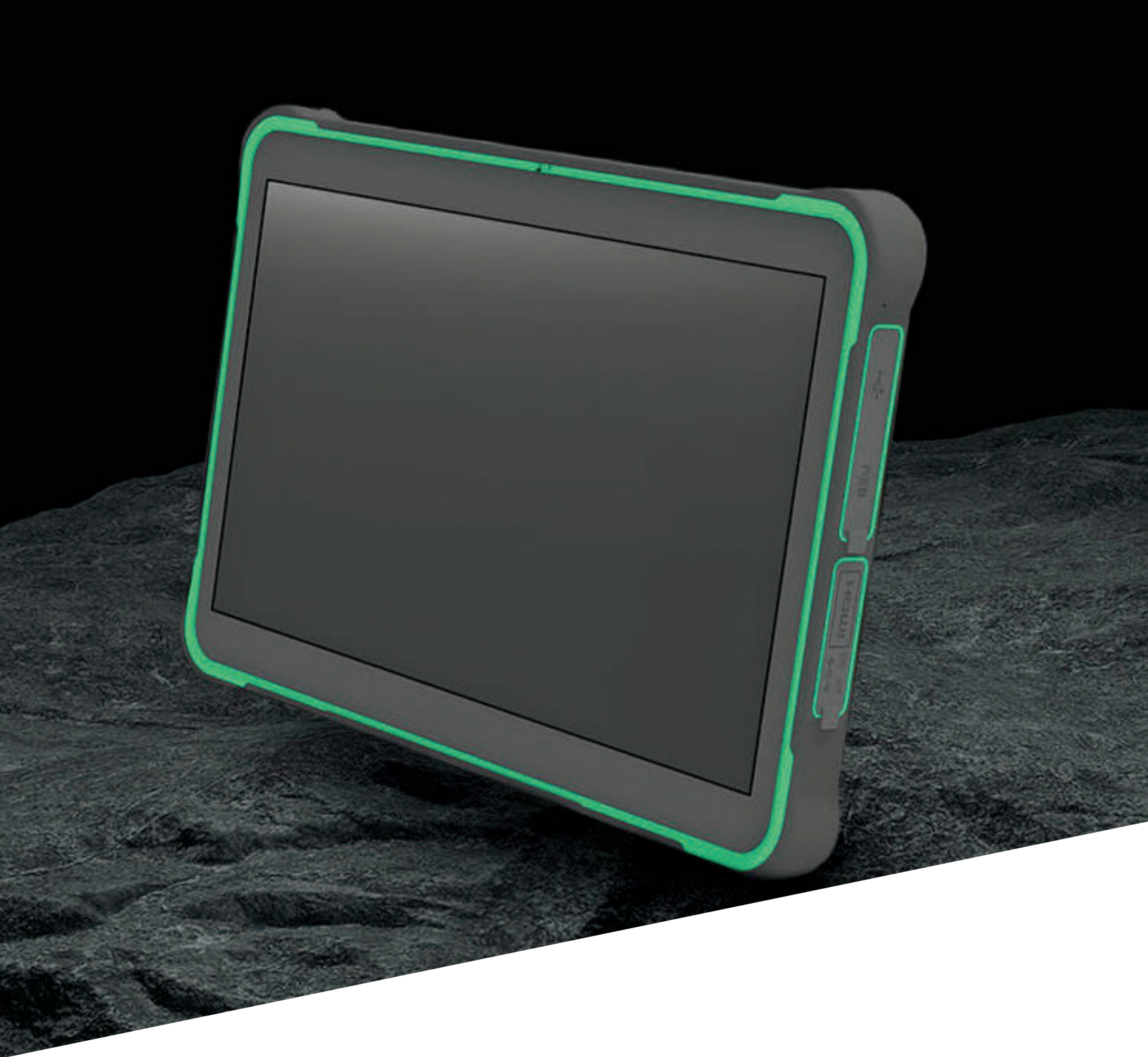
# NOTEBOOK ANDROID

---



## RTA 112-KB

**DISPLAY:** 12.2" resolution 1920 x 1200  
**TOUCHSCREEN:** Capacitive multi-touch  
**CPU:** Qualcomm Octa-Core  
**MEMORY:** 8GB/128GB  
**OPERATING SYSTEM:** Android 11  
**FEATURES:** Detachable keyboard



## TAILOR-MADE COMPUTER

---

Thanks to the dynamism of its technical staff and its excellent know-how, Ruggtek is able to offer customized computers in a very short time with competitive prices, thus minimizing the time between idea and product.

# TAILOR-MADE COMPUTER

---

Customization services include either partial modification or addition of special functions based on Ruggtek's standard products, or the design and implementation of a custom product with specific electronics performances, I/O interfaces, mold customization for color and shape, and so on.



This image shows a single sheet of white paper with horizontal ruling lines. The lines are evenly spaced and run across the width of the page. There are no margins, text, or other markings on the paper.

This image shows a full page of white paper with horizontal grey ruling lines. The lines are evenly spaced and run across the width of the page, providing a template for handwriting practice or general writing. There are no margins, text, or other markings on the page.

[www.ruggtek.com](http://www.ruggtek.com)



Via Regina Pacis 74c, Zipcode 41049 Sassuolo (Modena), Italy  
Phone: +39 0536 582 115 - Email: [info@ruggtek.com](mailto:info@ruggtek.com)